

# Permit Assessment flow

This flow chart outlines the best practice for an assessment based on the guidance from UK Scout's HQ

by following this flowchart all permit assessments & renewals will carry out moderation as a standard.

Hertfordshire scouts local guide - <https://www.activities.hertfordshirescouts.org.uk/aap-training>

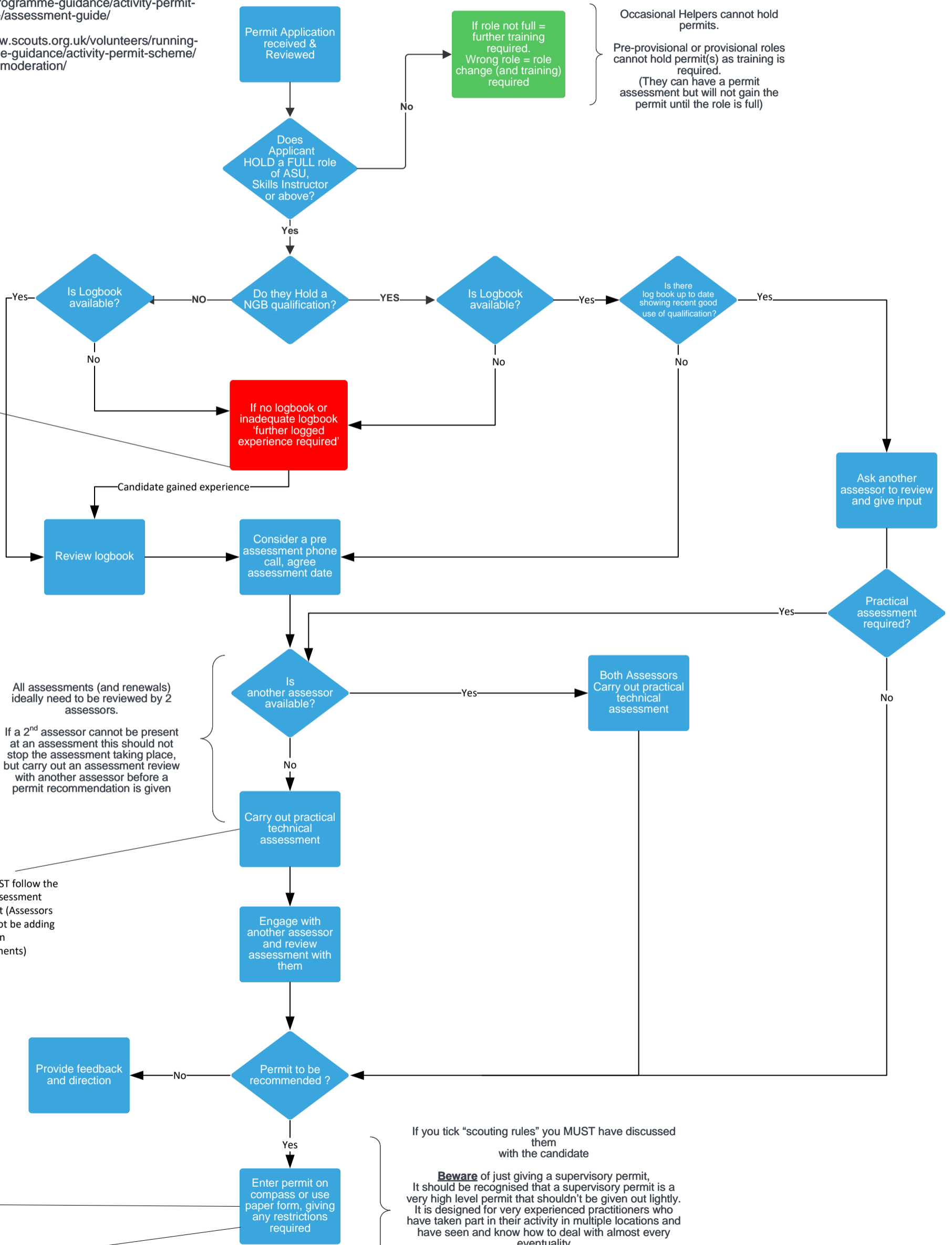
Assessment guide - <https://www.scouts.org.uk/volunteers/running-your-section/programme-guidance/activity-permit-scheme/assessment-guide/>

Moderation - <https://www.scouts.org.uk/volunteers/running-your-section/programme-guidance/activity-permit-scheme/moderation/>

Whilst POR doesn't have a set requirement outlined, a general guidance is to look at the NGB log book requirements (key focus is the NGB group work requirements)

if you reject a log book please advise why and what they need to do.

(an example "thorough" logbook can be found on the Hertfordshire scouts local guide)



Occasional Helpers cannot hold permits.

Pre-provisional or provisional roles cannot hold permit(s) as training is required. (They can have a permit assessment but will not gain the permit until the role is full)

All assessments (and renewals) ideally need to be reviewed by 2 assessors.

If a 2<sup>nd</sup> assessor cannot be present at an assessment this should not stop the assessment taking place, but carry out an assessment review with another assessor before a permit recommendation is given

This MUST follow the latest assessment check list (Assessors **MUST** not be adding their own requirements)

If assessing a member out of county, you either need to use the paper version of the recommendation form. OR send a clear email to their DC/CC with the required information

If assessing a youth member for a permit, a paper recommendation must be used, copies of this are requested to be sent to county MAPS, or the ACC-A & the DC.

If you tick "scouting rules" you MUST have discussed them with the candidate

**Beware** of just giving a supervisory permit, It should be recognised that a supervisory permit is a very high level permit that shouldn't be given out lightly. It is designed for very experienced practitioners who have taken part in their activity in multiple locations and have seen and know how to deal with almost every eventuality

beware (and its worth reminding the candidate) they cannot use their permit until the DC/CC approves it & is visible on compass.